





Size: 2 - 3/4 - 5/6 - 7/8 - 9/10 - 11/12 years

Size in cm: 92 - 98/104 - 110/116 - 122/128 - 134/140 - 146/152

Materials:

WENDY SUPREME DK WD04- COLOR

DOUBLE POINTED NEEDLES AND CIRCULAR NEEDLE (40 and 60 cm) SIZE 6 mm – or size needed to get 15 stitches and 19 rows in stocking stitch = width 10 cm and 10 cm vertically.

DOUBLE POINTED NEEDLES AND CIRCULAR NEEDLE (40 and 60 cm) SIZE 5 mm for rib – or size needed to get 17 stitches and 22 rows in stocking stitch = width 10 cm and 10 cm vertically.

INFORMATION FOR PATTERN:

GARTER STITCH (worked in the round):

1 ridge = 2 rounds. Knit 1 round and purl 1 round.

PATTERN:

See diagrams A.1, A.2 and A.3. Choose diagram for your size in A.2.

INCREASE TIP:

Increase as follows mid under sleeve - beg 1 stitch before marker: Make 1 yarn over, knit 2 (marker is between these 2 stitches), make 1 yarn over. On next round knit yarn overs twisted to avoid holes.

RAGLAN:

Decrease 2 stitches in every transition between body and sleeves. Begin 3 stitches before marker thread: Knit 2 together, knit 2 (marker thread is between these stitches), slip 1 stitch knitwise, knit 1, pass slipped stitch over stitch worked.

KNITTING TIP:

If knitting tension is incorrect in height and the knitting is too tight, the yoke will be too short and the armholes too small. This can be adjusted by working 1 extra round without decrease evenly spaced between decrease

BODY:

Worked in the round on circular needle, bottom up.

Cast on 132-142-150-150-150-160 stitches on circular needle size 5 mm with Air. Knit 1 round, then work rib as follows:

SIZE 2 years:

Knit 1, purl 3, knit 2, purl 3, A.1 (= 12 stitches), A.2 (= 6 stitches), A.1, A.2, A.1, * purl 3, knit 2 *, work from *-* over the next 15 stitches, purl 3, A.1, A.2, A.1, A.2, A.1, purl 3, knit 2, purl 3, knit 1.

SIZE 3/4 - 5/6 - 7/8 - 9/10 years:

Purl 1, knit 2, purl 3, knit 2, purl 3, A.1 (= 12 stitches), A.2 (= 6-8-8-8 stitches), A.1, A.2, A.1, * purl 3, knit 2 *, work from *-* over the next 20 stitches, purl 3, A.1, A.2, A.1, A.2, A.1, purl 3, knit 2, purl 3, knit 2, purl 2.

SIZE 11/12 years:

Knit 1, purl 3, knit 2, purl 3, knit 2, purl 3, A.1 (= 12 stitches), A.2 (= 8 stitches), A.1, A.2, A.1, * purl 3, knit 2 *, work from *-* over the next 25 stitches, purl 3, A.1, A.2, A.1, A.2, A.1, purl 3, knit 2, purl 3, knit 2, purl 3, knit 1.

ALL SIZES:

Continue with rib like this for 4 cm. Switch to circular needle size 6 mm.

Then work as follows:

Purl the first 9-11-11-11-11-14 stitches, A.3 (= 12 stitches), purl 6-6-8-8-8-8, A.3, purl 6-6-8-8-8-8, A.3, purl the next 18-23-23-23-23-28 stitches, A.3, purl 6-6-8-8-8-8, A.3, purl 6-6-8-8-8-8, A.3, purl over the last 9-12-12-12-12-14 stitches. On next round adjust number of stitches over the 18-23-23-23-23-28 stitches purl in each side to 18-22-20-24-26-28 stitches = 132-140-144-152-156-160 stitches. Insert 1 marker thread in each side, in the middle of purl stitches (= 66-70-72-76-78-80 stitches on back piece and front piece). Continue with A.3 and purl as before upwards. REMEMBER THE KNITTING TENSION! When piece measures 20-23-26-29-32-35 cm, cast off 6 stitches in each side for armholes (cast off 3 stitches on each side of both marker threads). There are 60-64-66-70-72-74 stitches on back piece and front piece. Put piece aside and work the sleeves.

SLEEVE:

Work in the round on double pointed needles, switch to short circular needle when needed. Cast on 30-30-30-35-35-35 stitches on double pointed needles size 5 mm with Air. Knit 1 round, then work rib = knit 2/purl 3. When piece measures 4 cm, switch to double pointed needles size 6 mm. Knit 1 round while decreasing 4-4-4-7-7-5 stitches evenly = 26-26-26-28-28-30 stitches. Insert 1 marker at beginning of round (= mid under sleeve). Then work in stocking stitch. When piece measures 6 cm, increase 2 stitches mid under sleeve - read INCREASE TIP. Increase like this every 3-3½-3½-4½-4½-5 cm 5-6-7-6-7-7 times in total = 36-38-40-40-42-44 stitches. When piece measures 21-26-29-33-37-41 cm, cast off 6 stitches mid under sleeve (cast off 3 stitches on each side of marker thread) = 30-32-34-34-36-38 stitches. Put piece aside and knit another sleeve.

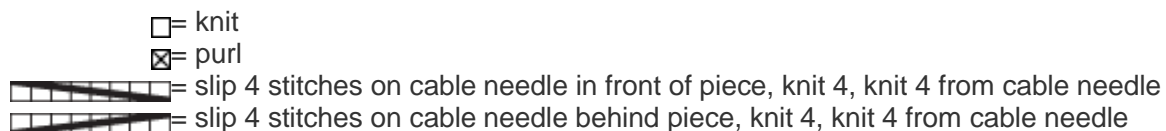
YOKE:

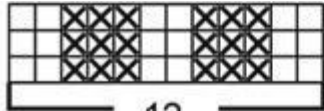
Slip sleeves on to same circular needle as body where armholes were cast off = 180-192-200-208-216-224 stitches. Insert a marker thread in all transitions between sleeves and body (= 4 marker threads). Continue with pattern as before and decrease for RAGLAN - see explanation above.

Decrease every 4th round 5-5-6-5-5-6 times and every other round 4-5-5-6-6-6 times = 9-10-11-11-12 times in total. When there are not enough stitches in each side towards the raglan lines to make the cables in A.3, decrease 6 stitches in A.3 in each side by knitting 2 by 2 stitches together. On last decrease for raglan decrease 6 stitches the same way over the two middle repetitions of A.3

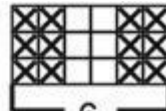
After all decreases are done, 72-76-76-84-92-92 stitches remain on round. Knit 1 round over all stitches while decreasing 12-16-16-19-22-22 stitches evenly = 60-60-60-65-70-70 stitches. Work 1 ridge in GARTER STITCH - see explanation above. Then work rib = knit 2/purl 3 for 3-3-3-4-4-4 cm. Cast off stitches with knit over knit and purl over purl.

Diagram

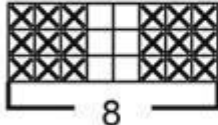




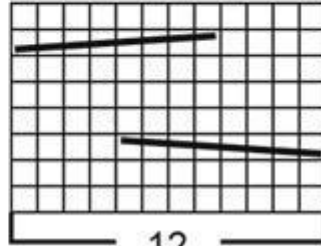
12
A.1



6
A.2
2 - 3/4



8
A.2
5/6 - 7/8 - 9/10 - 11/12



12
A.3

