









Size: 3 – 6/9 (12/18 -24) months

**Materials:**

WENDY SUPREME DK WD17-WD24-  
WD16 COLORS

Circular needle and double pointed needles: 2.5mm and 3mm.  
or the size needed to obtain the correct knitting tension.

Buttons: 5 pcs.

Jacket:

Knitting Tension: 24sts x 32 rows on needles size 3mm in stocking st = 10x10cm.

Moss st: 1st row: K1, P1. 2nd row: Work P over K and K over P. Repeat rows 1 and 2.

Pattern: See diagram (1 diagram = 1 repeat). Pattern is seen from RS and worked in stocking st.

Body: Jacket is worked back and forth on circ needle. Cast on 136-152(168-184) sts on circ needles size 2.5mm with 6942 color . Work 2-2 (3-3) cm in moss st. Change to circ needle size 3mm, and work stocking st - at the same time put 7 sts each side on needle size 2.5mm and work moss st across these for button band – work button holes on right button band , first one when work measures 2 cm and then approx 4.5 -5 (6.5-7) cm between each button hole – 1 button hole = cast off 4th st (middle st) , then cast on again on next row. At the same time when piece measures 3-3 (4-4) cm, work M.1 6942 color edge st each side of button band. On completion of M.1, finish piece in 6942 color – remember to check knitting tension. Continue until piece measures 14-16 (19-20) cm, work next row as follows: Work 36-39 (43-47) sts across front, cast off 4-6 (6-6) sts for arm hole, work 56-62 (70-78) sts across back, cast off 4-6 (6-6) sts for arm hole, work 36-39 (43-47) sts across front. Finish fronts and back separately

Left front: = 36-39 (43-47) sts. Dec for armhole on every other row as follows:  
1 st twice = 34-37 (41-45) sts. Continue until piece measures 22-25 (30-32) cm. Dec for neck on every other row as follows: 15-16 (18-19) sts once, 2 sts twice, 1 st twice. Continue until piece measures 26-29 (33-35) cm. Cast off remaining 13-15 (17-20) sts for shoulder.

Right front: Work as left front.

Back: = 56-62 (70-78) sts. Dec for armhole each side on every other row as follows: 1 st twice = 52-58 (66-74) sts. Continue until piece measures 24-27 (31-33) cm. Cast off centre 24-26 (30-32) sts for neck. Dec 1 st each side for neck. Continue until piece measures 26-29 (33-35) cm. Cast off remaining 13-15 (17-20) sts for each shoulder.

Sleeves: Cast on 36-42 (40-42) sts on double pointed needles size 2.5mm with 6942 color. Work 2-2(3-3) cm in moss st. Change to double pointed needles size 3mm, work stocking st, and at the same time inc 0-0 (8-10) sts evenly on first round = 36-42 (48-52) sts. At the same time inc sts under sleeve each side of centre st as follows: 1 st 11-10 (10-10) times for 3months: every 4th round, for 6/9+12/18 months: alternatively every 5th round, for 24 months: every 6th round = 58-62 (68-72) sts. When sleeve measures 3-3 (4-4) cm, work M.1, then finish in 6942 color (centre 1 repeat on top of sleeve). Continue until piece measures 16.5-20 (22-24) cm. Cast off 6 centre sts under sleeve and finish each side separately working back and forth on needle. Dec each side on every other row as follows: 5 sts 2-3 (3-3) times. Continue until piece measures 18-22 (24-26) cm. Cast off.

Assembly: Sew shoulder seams. Pick up approx 70-80 sts around neck with needles size 2.5mm with 6942 color . Work 2 cm in moss st. Cast off. Sew sleeves to body in edge st to avoid seams being too bulky. Sew in buttons.

Pants:

Size: 3 – 6/9 (12/18 -24) months

Circular needle and double pointed needles: 2.5mm and 3mm.

Buttons: 2 pcs.

Knitting Tension: 24sts x 32 rows on needles size 3mm in stocking st = 10x10cm.

Rib: \*K1, P1\*. Repeat from \* - \*.

Left leg: Cast on 52-62 (72-72) sts on double pointed needles size 2.5mm with 6942 color. Work 8-10 (10-10) cm rib. Change to double pointed needles size 3mm. Work M.3. and at the same time inc 24-22 (24-24) sts evenly on 1st round = 76-84 (96-96) sts. Continue until piece measures 21-25 (28-32) cm.

Divide work on inside of leg in centre of 1 repeat and work back and forth on needle. Inc 1 st each side for seam = 78-86 (98-98) sts. Continue until piece measures 23-27 (30-34) cm. Cast off 3 sts each side = 72-80 (92-92) sts. Put work aside.

Right leg: Work as left leg.

Pants: Put left leg and right leg on a circ needle = 144-160 (184-184) sts.

Inc on every other round each side of 2 centre sts centre back: 1 st twice – and at the same time dec on every other round each side of centre 2 sts centre front: 1 st twice. Dec as follows: Right side of centre: S1, K1, pss0. Left side: K2tog. Continue until piece measures 40-46 (51-56) cm. Work centre 31-35 (41-41) sts centre front and centre back in stocking st on needle size 3mm, and work sts each side in rib on needles size 2.5mm. At the same time dec 8sts evenly across rib on 1st round. Work 3 cm rib. Cast off 23-27 (33-33) sts each side for armhole and finish back and front separately.

Front: = 41-45 (51-51) sts. Continue across all sts on needle size 3mm. Work rib across 5 sts each side and stocking st across rest of sts (make sure to make rib pattern fit to continue rib as worked earlier). Dec inside 5 sts each side as follows: 1 st 7-7 (8-8) times alternatively on every \*3rd and 4throw\* = 27-31 (35-35) sts. Dec in same manner as explained earlier on left and right side.

Continue until bib measures 8-8 (10-10) cm (after rib). Change to needle size 2.5mm and inc 6 sts evenly on 1st row = 33-37 (41-41) sts.

Work 1 cm in rib but after 1 row make 1 button hole 3 sts in from each side – 1 button hole = cast off 2 sts – cast on 2 sts over these on next row.

Cast off when rib measures 1 cm. Piece measures approx 52-58 (65-70) cm.

Back: Work as front but when bib measures 4-4 (6-6) cm change to needle size 2.5mm and at the same time inc 8 sts evenly on 1st row. Work 1 cm in rib. Cast off centre sts but leave 12 sts each side. Continue on these 12 sts each side on needle size 2.5mm until braces are 20 cm long. Cast off.

Assembly: Sew seams. Sew in buttons. Embroider M.2 on centre of bib.

Embroider mouth in brown with back stitch.

Sweater:

Buttons: 2 pcs.

Knitting Tension: 24sts x 32 rows on needles size 3mm in stocking st = 10x10cm.

Rib: \*K1, P1\*

Body: Cast on 120-134 (148-158) sts on circ needles size 2.5mm with yellow. Work 3-3 (4-4) cm rib. Change to circ needle size 3mm and work stocking st. Continue until piece measures 14-15 (17-19) cm. Cast off 6-6 (6-6) sts each side for armhole and finish front and back separately.

Front: = 54-61 (68-73) sts. Dec for armhole each side on every other row as follows: 1 st twice = 50-57 (64-69) sts. Continue until piece measures 22-24 (28-31) cm. Cast off centre 14-17 ((18-21) sts for neck and dec on neck edge on every other row as follows: Right shoulder: 2 sts twice, 1 st twice. Continue until piece measures 26-28 (31-34) cm. Cast off. Left shoulder: 1 sts twice on every 3rd row. Continue until piece measures 25-27 (30-33) cm. Change to needle size 2.5mm and work 2 cm rib, but after 2 rows make 2 button holes evenly spaced – 1 buttonhole = cast off 2 sts, cast on 2 sts on next row. Cast off.

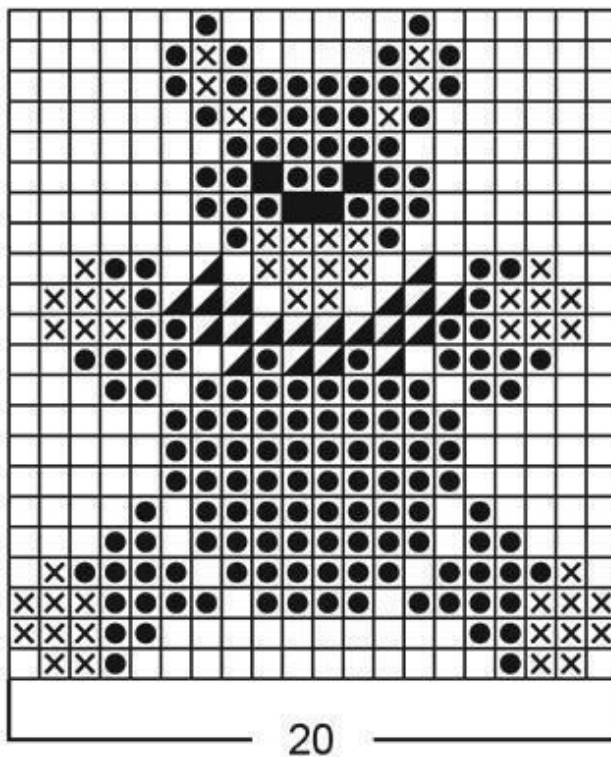
Back: = 54-64 (68-73) sts. Work as front until piece measures 25-27 (30-33) cm. Cast off centre 22-25 (26-29) sts for neck. Right shoulder: Dec 1 st on next row on neck edge. Continue until piece measures 26-28 (31-34) cm. Cast off remaining sts for shoulder. Left shoulder: Dec 1 st on next row on neck edge. Continue in stocking st until piece measures 28-30 (33-36) cm. Cast off.

Sleeves: Cast on 48-50 (50-52) sts on double pointed needles size 2.5mm with yellow. Work 2 cm rib. Change to needles size 3mm and work stocking st and at the same time inc 0-2 (6-8) sts evenly on first round = 48-52 (56-60) sts. At the same time inc underneath sleeve as follows: 2 sts 5-5 (6-6) times for 3months: every other round, for 6/9+12/18 months+ 24 months: every 3rd round = 58-62 (68-72) sts. Continue until piece measures 7-8 (9-10) cm. Cast off 6 centre sts underneath sleeve and finish each side separately working back and forth on needle. Further dec each side on every other row as follows: 5 sts 3 times. Continue until piece measures 9-10 (11-12) cm. Cast off.

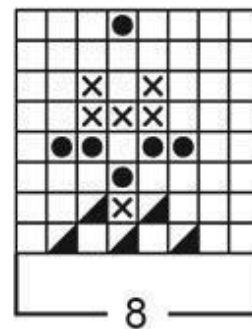
Assembly: Sew shoulder seams. Pick up approx 70-80 sts around neck opening on circ needle size 2.5mm with yellow. Work 2 cm in rib working back and forth on needle, and at the same time make button hole on left shoulder. Cast off. Sew sleeves to body in edge st to avoid seams being too bulky. Sew in buttons.

## Diagram

M.2



M.1



M.3

