





SIZES:

2 - 3/4 - 5/6 - 7/8 - 9/10 - 11/12 years

Equivalent to approx. height of child in cm:

92 - 98/104 - 110/116 - 122/128 - 134/140 - 146/152

MATERIALS:

WENDY SUPREME DK WD32- WD01

COLORS

KNITTING TENSION:

21 stitches in width and 28 rows in height with stocking stitch = 10 x 10 cm.

NEEDLES:

DOUBLE POINTED NEEDLES SIZE 4 MM.

CIRCULAR NEEDLE SIZE 4 MM: length 40 cm and 60 cm for stocking stitch.

DOUBLE POINTED NEEDLES SIZE 3 MM.

CIRCULAR NEEDLE SIZE 3 MM: length 40 cm and 60 cm for rib.

Needle size is only a guide. If you get too many stitches on 10 cm, change to a larger needle size. If you get too few stitches on 10 cm, change to a smaller needle size.

EXPLANATIONS FOR THE PATTERN:

RIDGE/GARTER STITCH (worked back and forth):

Knit all rows.

1 ridge in height = Knit 2 rows.

INCREASE TIP:

To work out how to increase evenly, count the total number of stitches on the needle (e.g. 76 stitches) and divide by the number of increases to be made (e.g. 14) = 5.4.

In this example, increase by making 1 yarn over after alternately each 5th and 6th stitch. On the next round work the yarn overs twisted to avoid holes.

PATTERN:

See diagram A.1. Choose diagram for your size. The whole of the diagram is worked in stocking stitch. Work with 3 balls to avoid long strands at the back; i.e. work with 1 ball light sea green on either side of the piece and 1 ball of black in the middle. NOTE: To avoid holes when changing colour twist the strands together at the back of the piece.

RAGLAN:

Increase to raglan in each transition between front/back piece and sleeves as explained below: Increase after the marker like this: knit 1, make 1 yarn over.

Increase before the marker like this: work until 1 stitch remain before the marker, make 1 yarn over, knit 1.

You increase 2 stitches at each marked, and a total of 8 stitches on the round. On the next round knit the yarn overs twisted to avoid holes. Then work the new stitches in stocking stitch.

DECREASE TIP (for mid under sleeves):

Decrease 1 stitch on each side of the marker thread as follows: Work until there are 3 stitches left before the marker thread, slip 1 stitch as if to knit, knit 1 and pass the slipped stitch over the knitted stitch, knit 2 (marker thread sits in the middle of these 2 stitches), knit 2 together (2 stitches decreased).

START THE PIECE HERE:

UMPER - SHORT OVERVIEW OF THE PIECE:

Neck and yoke are worked in the round with circular needle, top down. The yoke is divided for body and sleeves. Front and back pieces are continued separately back and forth with circular needle, top down. The sleeves are worked in the round with double pointed needles, top down.

NECK:

Cast on 76-80-84-88-92-96 stitches with short circular needle size 3 mm and light sea green. Knit 1 round, then work rib in the round (knit 2/ purl 2) for 3 cm. Knit 1 round where you increase 14 stitches evenly spaced in all sizes – read INCREASE TIP = 90-94-98-102-106-110 stitches. Then work the yoke as described below.

YOKE:

Change to circular needle size 4 mm. Insert 4 markers in the piece as described below (without working the stitches). The markers will be used when increasing to raglan.

Insert 1 marker at the beginning of the round, count 13 stitches (= sleeve), insert 1 marker before the next stitch, count 32-34-36-38-40-42 stitches (= front piece), insert 1 marker before the next stitch, count 13 stitches (= sleeve) and insert 1 marker before the next stitch. There are 32-34-36-38-40-42 stitches left after the last marker on the back piece.

Work stocking stitch in the round and increase for RAGLAN on each side of the 4 markers – read explanation above. REMEMBER THE KNITTING TENSION!

Continue with stocking stitch AT THE SAME TIME increase to raglan every 2nd round a total of 16-17-18-19-20-21 times on each side of all 4 markers (including the first increase described above) = 218-230-242-254-266-278 stitches.

Continue with stocking stitch without increasing until the piece measures 14-15-16-17-18-19 cm from the cast-on edge.

Now divide the yoke for body and sleeves on the next round as follows: Start 1 stitch before the marker at the beginning of the round (i.e. slip the first stitch on right needle onto left needle), place the first 47-49-51-53-55-57 stitches on 1 thread for sleeve, cast on 6 new stitches on needle (= in

side under sleeve), work 62-66-70-74-78-82 stitches in stocking stitch (= front piece), place the next 47-49-51-53-55-57 stitches on 1 thread for sleeve, cast on 6 new stitches on needle (= in side under sleeve), place the last 3 of these 6 stitches on 1 thread for back piece, place the next 62-66-70-74-78-82 stitches on the same thread and the first 3 stitches of the next 6 stitches (cast on under the other sleeve) on this same thread for back piece. Front and back pieces and sleeves are finished separately. THE PIECE IS NOW MEASURED FROM HERE!

FRONT PIECE:

= 68-72-76-80-84-88 stitches. Work stocking stitch back and forth with blue. AT THE SAME TIME on the first row cast on 1 stitch on each side (edge stitches for seams – edge stitches are worked in GARTER STITCH – read description above) = 70-74-78-82-86-90 stitches on row. When the piece measures 1-2-3-3-4-5 cm from the division work the next row as follows from the right side: 1 edge stitch in garter stitch, 13-15-17-16-18-20 stitches in stocking stitch, work A.1 (= 42-42-42-48-48-48 stitches – read PATTERN), work 13-15-17-16-18-20 stitches in stocking stitch and finish with 1 edge stitch in garter stitch.

Continue this pattern. When A.1 has been completed, the piece measures approx. 18-19-20-23-24-25 cm from the division. Continue back and forth white stocking stitch and 1 edge stitch in garter stitch on each side, white over the middle 42-42-42-48-48-48 stitches and blue on each side as before until the piece measures 18-21-24-27-30-33 cm from the division (or to desired length; there is 1 cm left to finished length).

Change to circular needle size 3 mm and work 2 ridges back and forth over all stitches (continue white over the middle 42-42-42-48-48-48 stitches and blue on each side).

Loosely cast off with knit from the right side (cast off with blue over blue and white over white). The front piece measures approx. 36-40-44-48-52-56 cm from the shoulder down.

BACK PIECE:

Place the 68-72-76-80-84-88 stitches from the back-piece thread on circular needle size 4 mm. Work stocking stitch back and forth blue. AT THE SAME TIME on the first row cast on 1 stitch on each side (edge stitches for seams which are worked in garter stitch) = 70-74-78-82-86-90 stitches on needle.

When the piece measures 1-2-3-3-4-5 cm from the division work the next row from the right side as follows: 1 edge stitch in garter stitch, 13-15-17-16-18-20 stitches in stocking stitch, work A.1 (= 42-42-42-48-48-48 stitches – read PATTERN), work 13-15-17-16-18-20 stitches in stocking stitch and finish with 1 edge stitch in garter stitch. Continue this pattern.

When A.1 has been completed the piece measures approx. 18-19-20-23-24-25 cm from the division.

Continue back and forth white stocking stitch and 1 edge stitch in garter stitch on each side, white over the middle 42-42-42-48-48-48 stitches and blue on each side as before until the piece measures 18-21-24-27-30-33 cm from the division (or to desired length; there is 1 cm left to finished length).

Change to circular needle size 3 mm and work 2 ridges back and forth over all stitches (continue white over the middle 42-42-42-48-48-48 stitches and blue on each side).

Loosely cast off with knit from the right side (cast off with blue over light sea green and white over black). The back piece measures approx. 36-40-44-48-52-56 cm from the shoulder down

ASSEMBLY:

Embroider eyes onto the front piece with duplicate stitches in pearl grey – see A.1.

Sew side seams inside the 1 edge stitch in garter stitch.

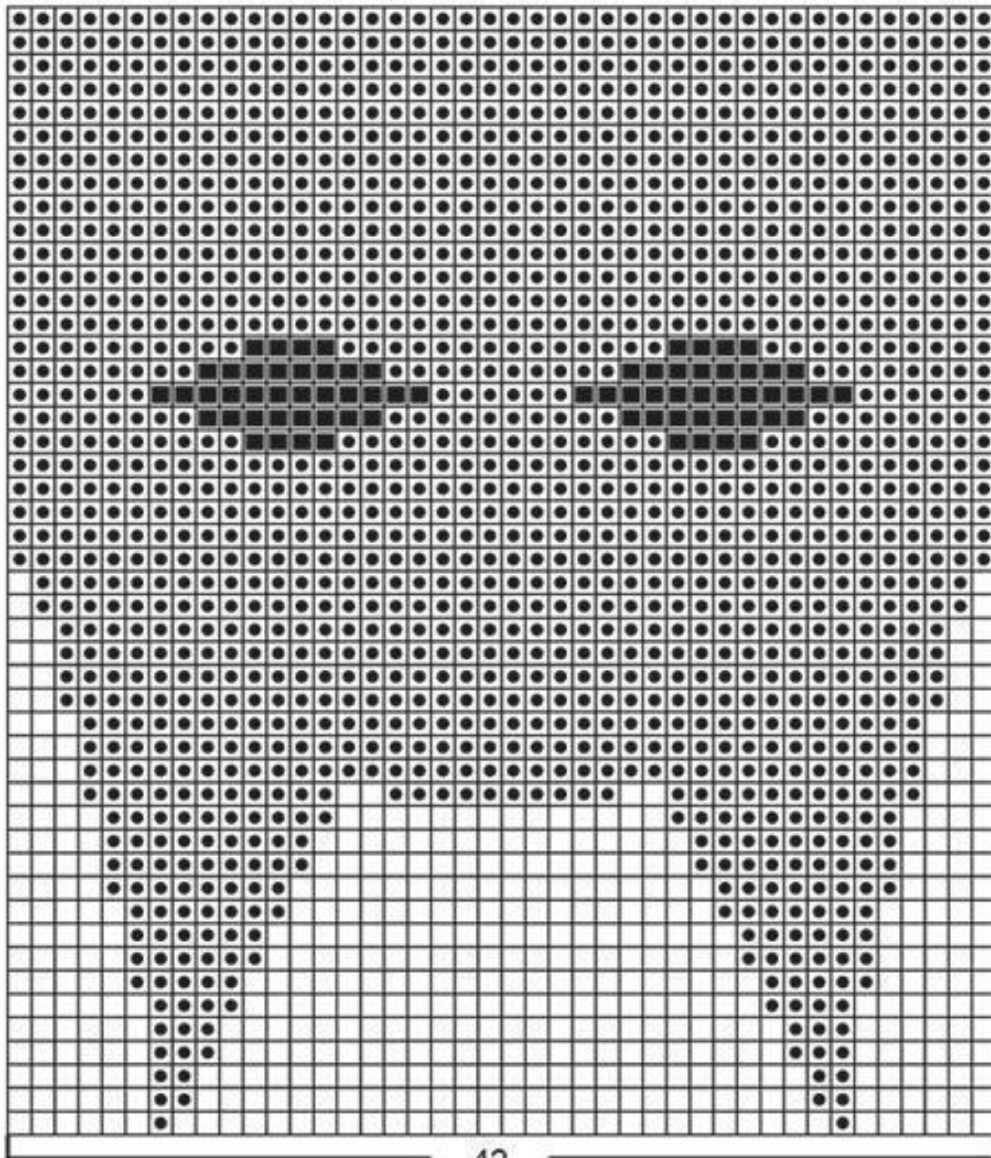
SLEEVE:

Place the 47-49-51-53-55-57 stitches from the thread on the one side of the piece on double pointed needles size 4 mm and knit up 1 stitch in each of the 6 stitches cast on under the sleeve = 53-55-57-59-61-63 stitches. Insert 1 marker thread in the middle of these 6 stitches. Allow the marker thread to follow your work onwards; it will be used when decreasing mid under sleeve.

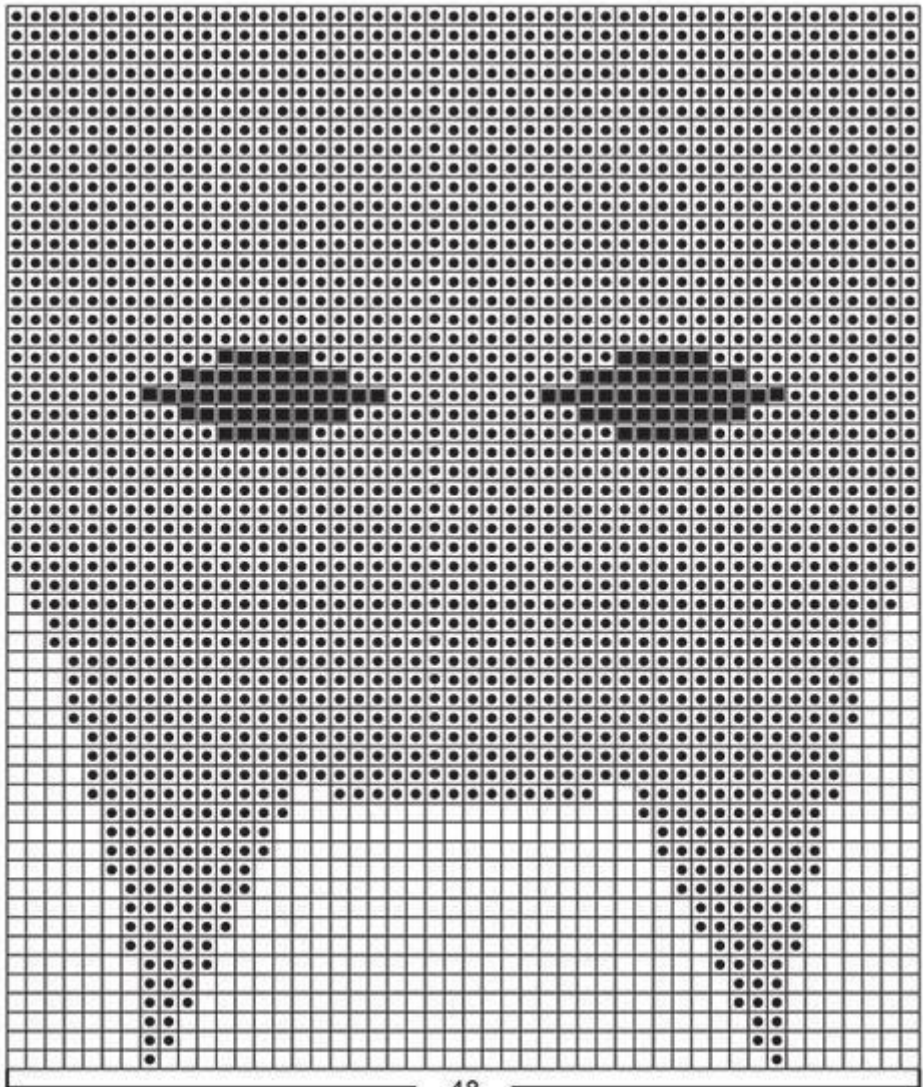
Start the round by the marker thread and work stocking stitch in the round with light sea green. When the sleeve measures 3 cm from the division decrease 2 stitches mid under sleeve – read DECREASE TIP. Decrease like this every 2-2½-3-3½-4-4½ cm a total of 8 times in all sizes = 37-39-41-43-45-47 stitches. Continue working until the sleeve measures 20-24-27-31-34-38 cm

from the division (or to required length; there is approx. 3-3-3-4-4-4 cm left to finished length). Knit 1 round where you increase 3-5-3-5-3-5 stitches evenly spaced = 40-44-44-48-48-52 stitches. Change to double pointed needles size 3 mm and work rib in the round (= knit 2/ purl 2) for 3-3-3-4-4-4 cm. Loosely cast off with knit over knit and purl over purl. The sleeve measures approx. 23-27-30-35-38-42 cm from the division. Work the other sleeve in the same way.

Diagram:



42
A.1
2 - 3/4 - 5/6



48

A.1

7/8 - 9/10 - 11/12

